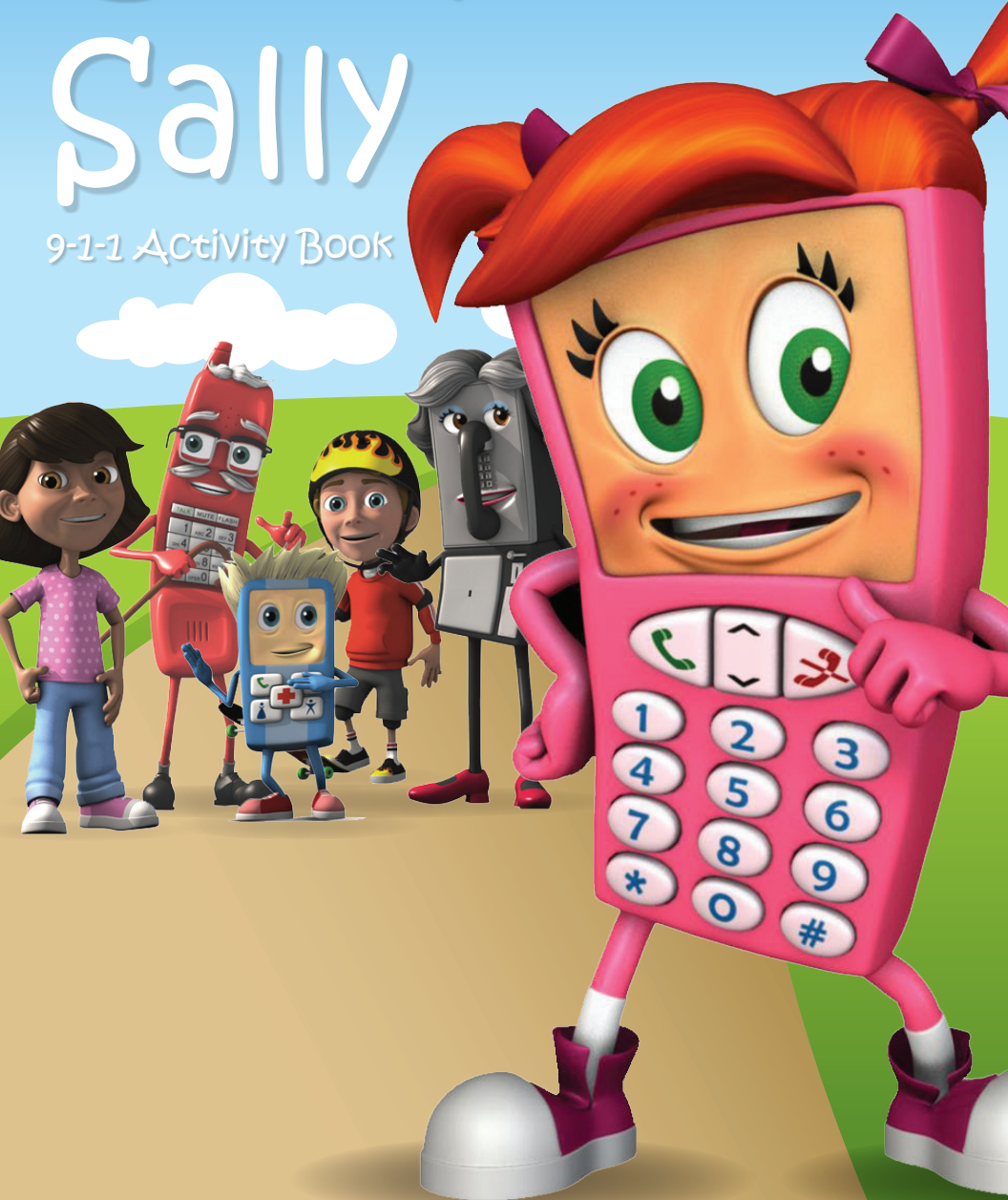
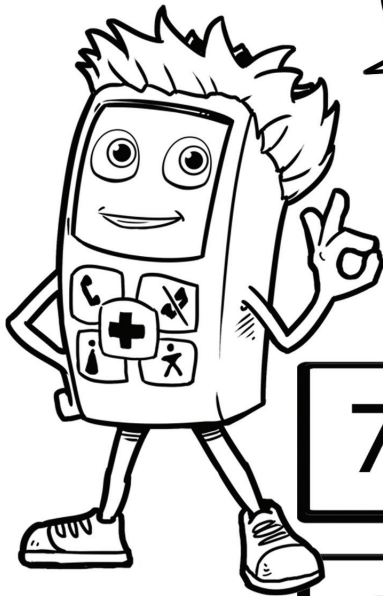


# Cell Phone Sally

9-1-1 Activity Book



# MARK THE NUMBER



MARK WITH A BLUE  
CIRCLE THE FIRST NUMBER YOU  
NEED TO DIAL IN CASE OF EMERGENCY.  
THEN MARK WITH A RED CIRCLE THE  
SECOND AND THIRD NUMBERS YOU  
NEED TO DIAL.

TRAZA UN CÍRCULO  
AZUL EN EL PRIMER NÚMERO QUE  
MARCAS AL LLAMAR EN CASO DE UNA  
EMERGENCIA. LUEGO TRAZA UN CÍRCULO  
ROJO EN EL SEGUNDO Y TERCER  
NÚMERO QUE MARCAS.

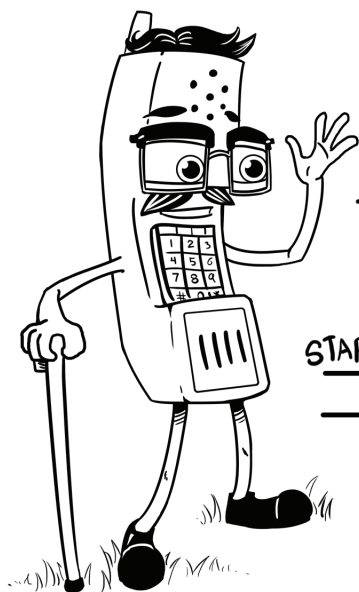
7	8	9
4	5	6
1	2	3
*	0	#

# SKATE INTO ADVENTURE CONNECT THE DOTS



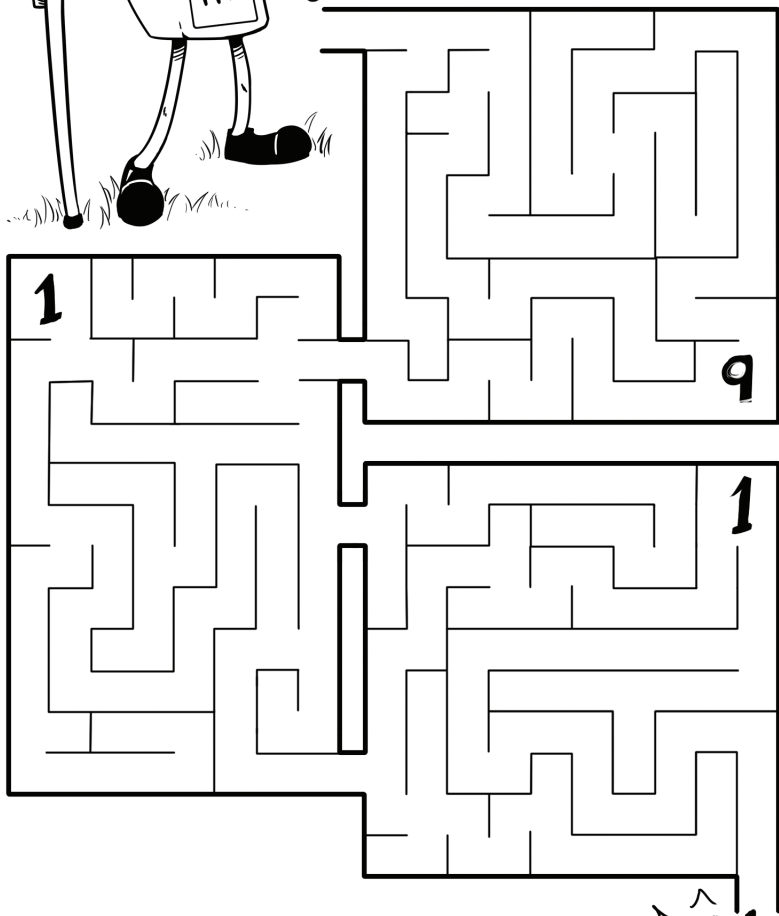
## WHAT TO DO WHEN 9-1-1 ANSWERS YOUR CALL

- STAY CALM AND SPEAK CLEARLY.
- TELL THE 9-1-1 CALL TAKER WHAT IS WRONG AND WHERE YOU NEED HELP.
- STAY ON THE PHONE UNTIL THE 9-1-1 CALL TAKER TELLS YOU TO HANG UP.



FIND THE 9-1-1  
NUMBERS IN THE  
MAZE AND LOCATE  
THE EXIT.

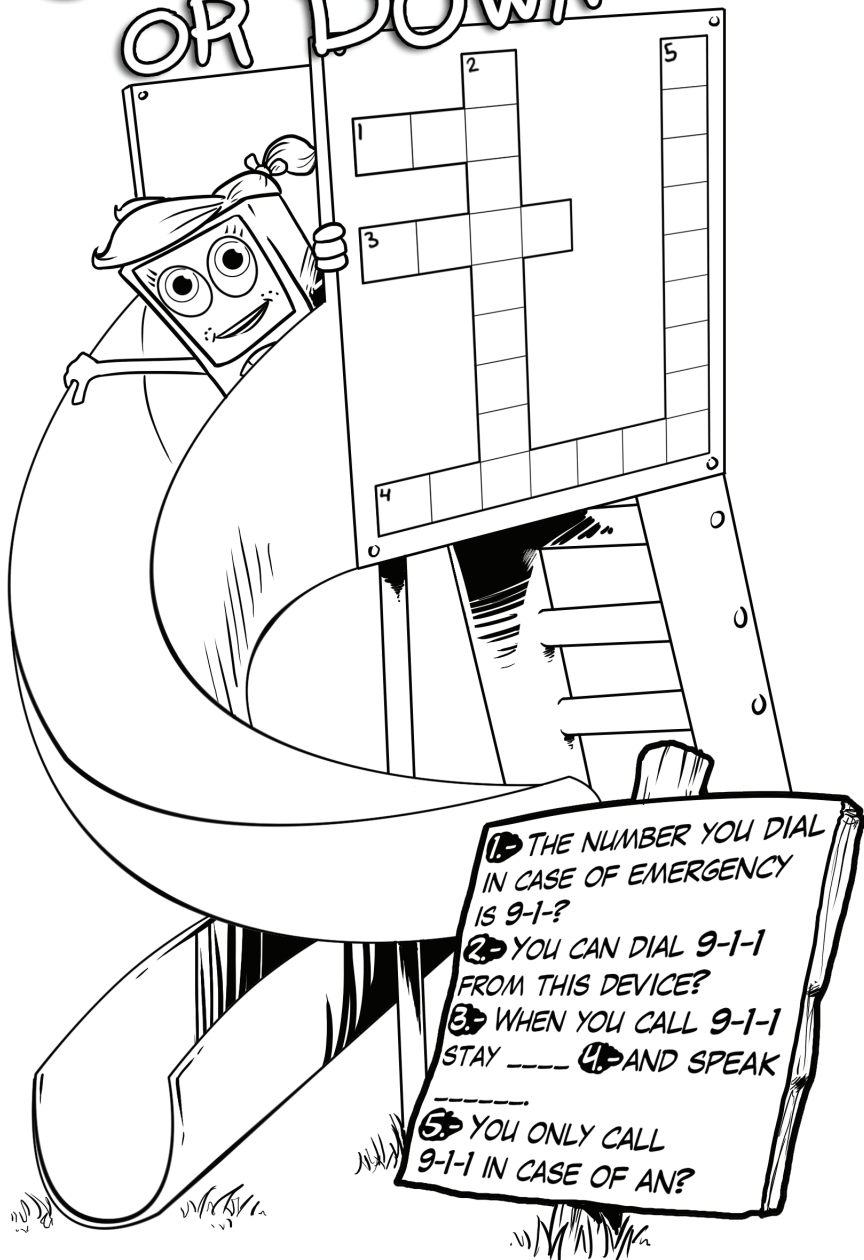
START



911!

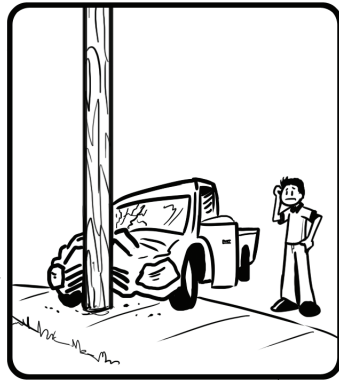
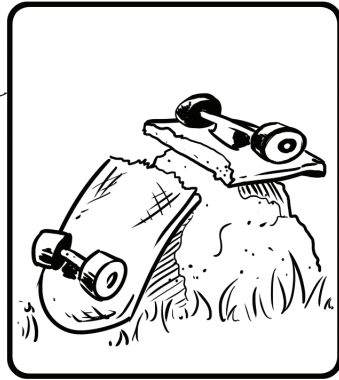


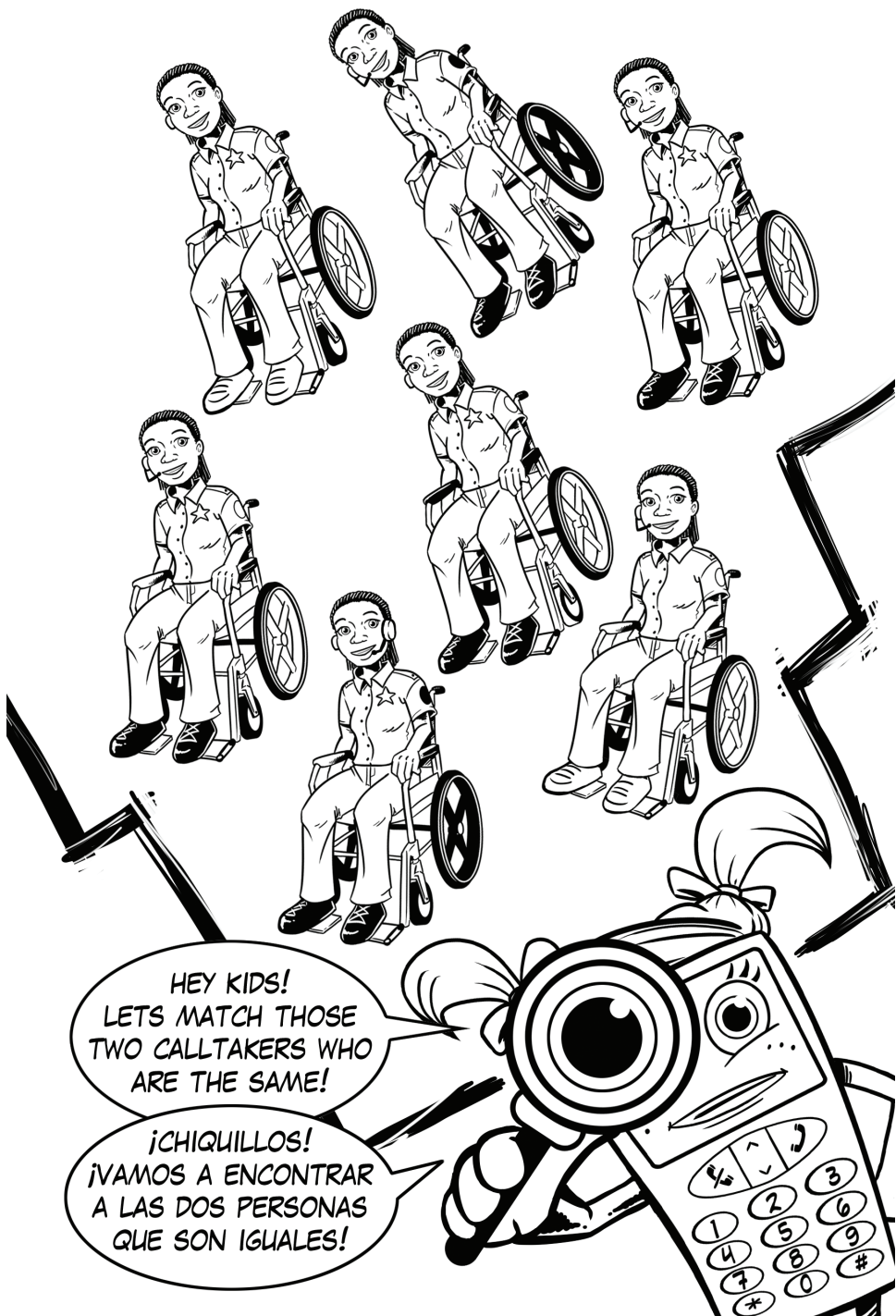
# SLIDE ACROSS OR DOWN



# WHEN DO YOU CALL 9-1-1?

CIRCLE THE IMAGES YOU THINK DEPICTS  
WHEN ITS OK TO CALL 9-1-1





HEY KIDS!  
LET'S MATCH THOSE  
TWO CALLTAKERS WHO  
ARE THE SAME!

¡CHIKILLLOS!  
¡VAMOS A ENCONTRAR  
A LAS DOS PERSONAS  
QUE SON IGUALES!

# WORD JUMBLE

FIRNEME

(E) (M)

MEDIPARCA

(R)   (E)   (C)

TESYFA

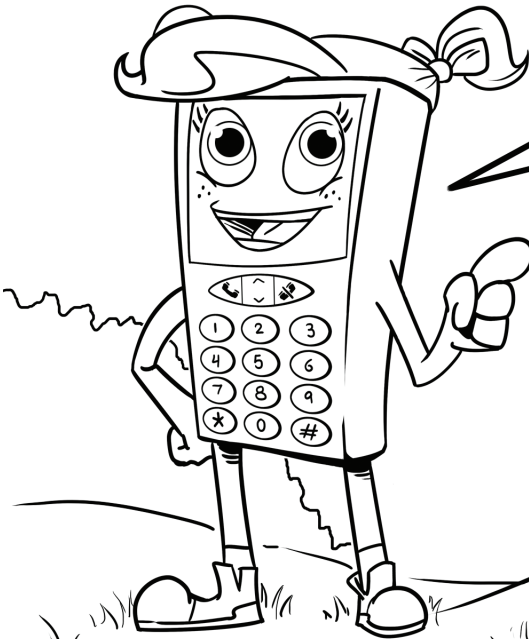
(Y)

ADNGER

(N) (G) (E)

UNSCRAMBLE  
THE WORDS TO  
REVEAL A SECRET  
MESSAGE!

AND YOU  
ONLY CALL 9-1-1  
WHEN ITS AN  
--E--E--



# SWING INTO ACTION

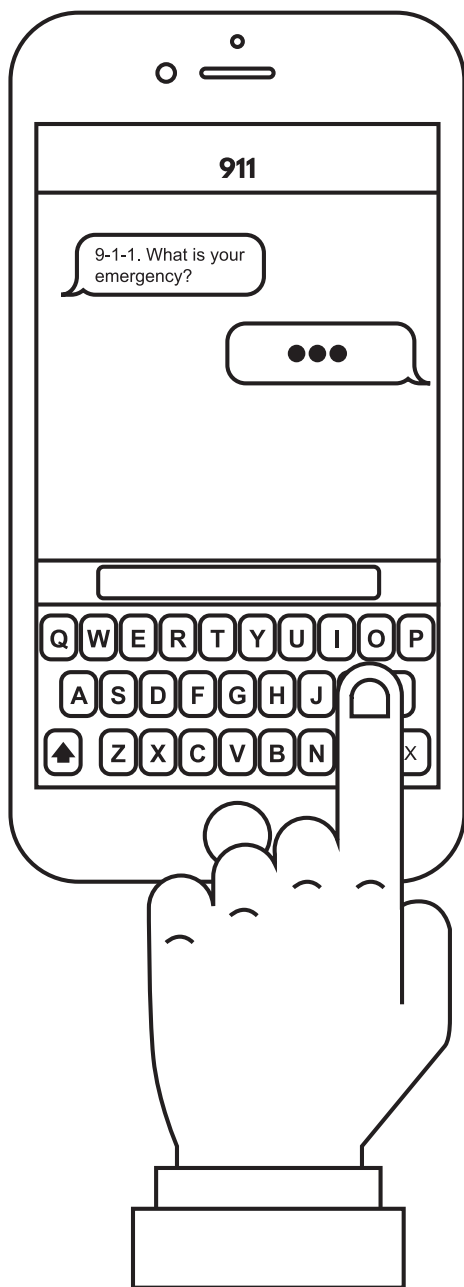


## WORDS

**FIRE TRUCK**  
**SAFETY**  
**DANGER**  
**HELP**  
**PARAMEDIC**  
**EMERGENCY**  
**POLICE**  
**AMBULANCE**

S	F	B	X	N	P	L	A	L	S	F	D	Y	P
D	H	Y	O	Q	A	M	B	H	L	W	Z	T	X
J	H	E	L	P	K	P	I	C	N	R	Z	P	V
R	Z	R	G	G	B	T	D	A	N	G	E	R	A
E	M	E	R	G	E	N	C	Y	X	H	D	H	F
B	Q	B	W	S	K	G	Q	H	V	A	A	D	I
S	D	G	A	U	E	S	J	S	Z	L	Q	A	R
L	A	M	B	U	L	A	N	C	E	T	M	I	E
O	R	J	H	H	F	N	Z	P	Z	Z	B	T	
U	G	N	A	C	U	E	S	B	O	V	H	I	R
X	Q	W	V	X	Q	T	O	W	L	C	M	R	U
N	Z	B	A	W	I	Y	G	J	I	J	F	Q	C
G	E	F	C	R	C	Z	U	P	C	R	O	P	K
S	D	N	O	P	A	R	A	M	E	D	I	C	E

# CALL IF YOU CAN, TEXT IF YOU CAN'T!



## IMPORTANT TIPS ABOUT SENDING A TEXT TO 9-1-1

YOU SHOULD SEND A TEXT TO 9-1-1 IF:

- IT IS NOT SAFE TO MAKE A PHONE CALL
- IF YOU HAVE PROBLEMS TALKING OR HEARING
- DO NOT SEND VIDEOS OR GIFS
- BE SURE TO KNOW YOUR LOCATION OR DESCRIBE THINGS AROUND YOU.
- TEXT TO 9-1-1 ISN'T AVAILABLE EVERYWHERE YET. IF YOUR LOCATION DOESN'T SUPPORT TEXT TO 9-1-1 YOU WILL GET A MESSAGE BACK SAYING SO.





HELP THESE COMMUNITY WORKERS. FIND THE SHORTEST ROUTE TO THE EMERGENCY.



# Cell Phone Sally



**TCOG**<sup>™</sup> | regional services  
public safety

1117 Gallagher Drive, Suite 100, Sherman, Tx 75090

(903) 813-3552 - (800) 677-8264

[www.tcog.com/911](http://www.tcog.com/911)