

Texoma Economic Development District

STANDARD OF COVER COMMUNITY DATA REPORT



TEXOMA COUNCIL OF GOVERNMENTS



Prepared by Mysidewalk.com with assistance and funding from the Economic Development Administration (EDA), U.S. Department of Commerce

Texoma Council of Governments
June 2022



Standards of Cover Community Data Report

This report displays the community data needed to ensure a safe and effective response force for all residents, workers and visitors within a response area. A standards of cover is defined by the Commission on Fire Accreditation International¹³ as "adopted, written policies and procedures that determines the distribution, concentration and reliability of fixed and mobile response forces for fire, emergency medical services, hazardous materials and other forces of technical response." Developing these policies and procedures starts by building an understanding of the department's response area. To assist, this report covers the following topics:

- Area Served
- Population
- Demographics
- Housing Units
- Socioeconomic Status

Area Served

Area Served

No data

Acres

Texoma 3 counties

575,041

Acres

Cooke County, TX

626,686

Acres

Grayson County, TX

575,286

Acres

Fannin County, TX

Residents Served

209,001

Total population

Texoma 3 counties

40,428

Total population

Cooke County, TX

133,527

Total population

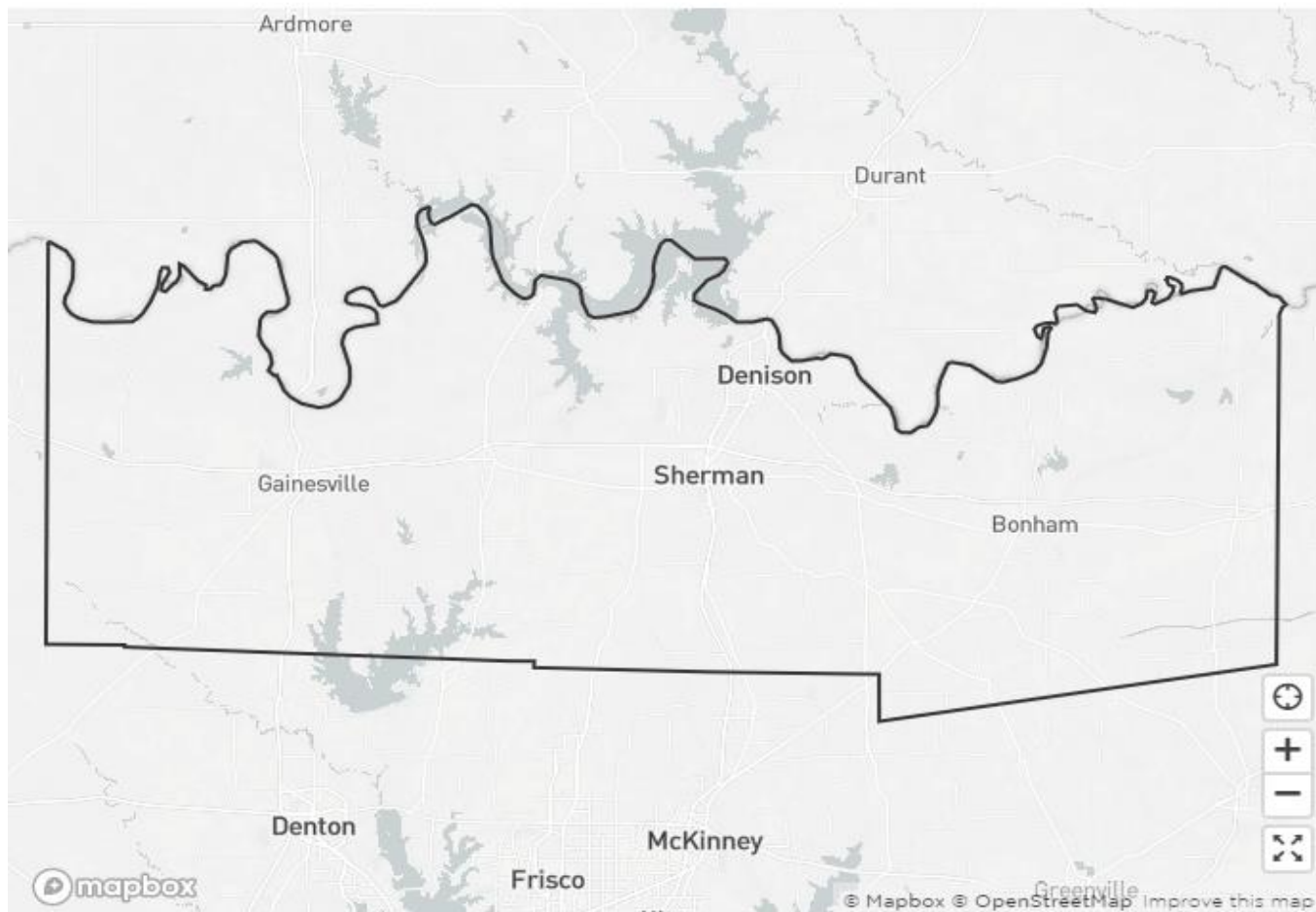
Grayson County, TX

35,046

Total population

Fannin County, TX

Sources: US Census Bureau 2020; US Census Bureau ACS 5-year 2016-2020

**Area Boundary - Page 1 of 3**

 Texoma 3 counties

Outdoor Features and Topography - Page 2 of 3

This map demonstrates outdoor features including:

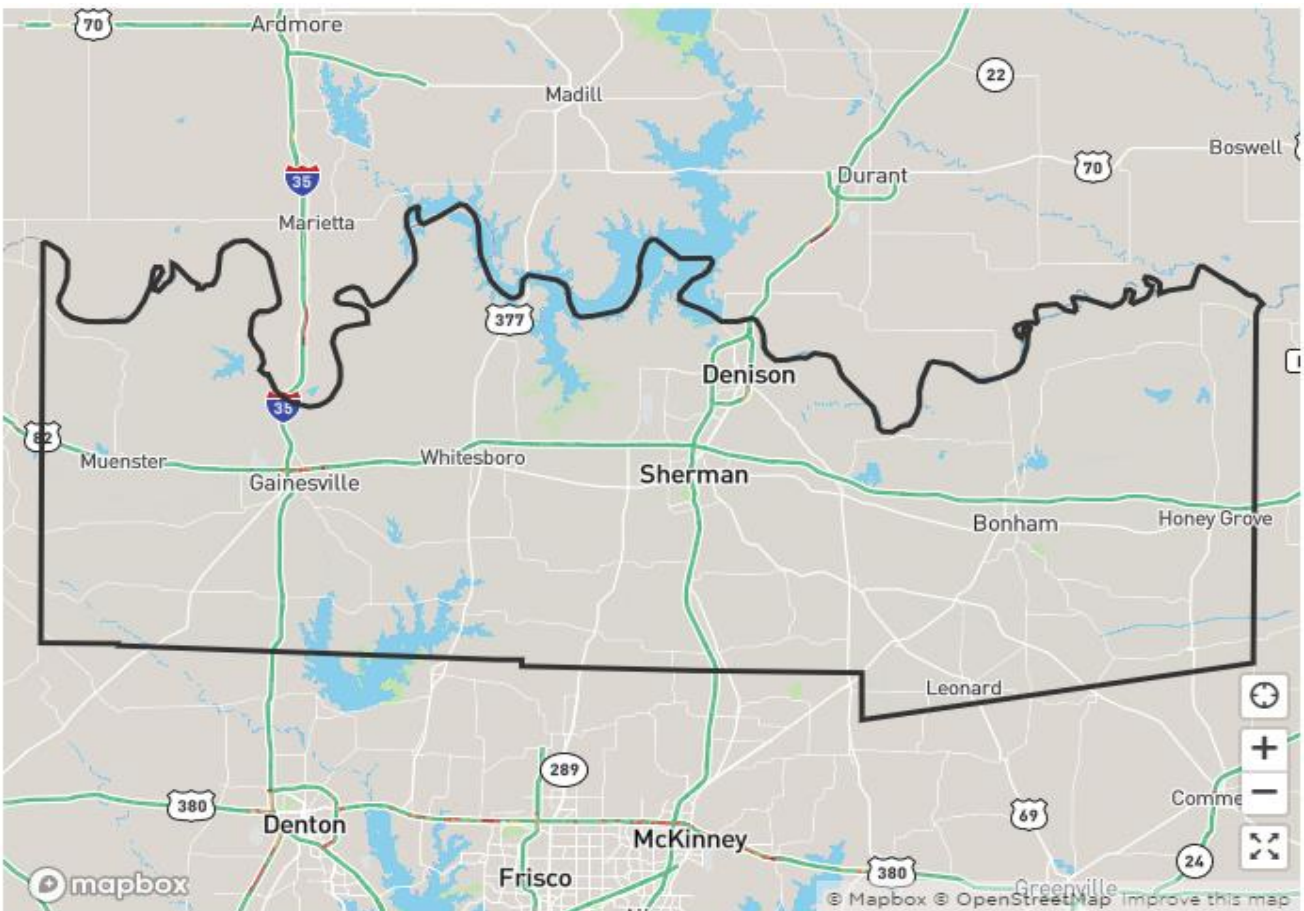
- Natural features such as rivers, lakes, streams, oceans, coastal boundaries, parks, land cover, and beaches.
- Terrain and topographic features. Zoom in to view contour lines.
- Built features such as building footprints, rail stations, parks, land use and landmarks.
- Roadway features such as interstates, highways, roads, trails, transit icons and more.



Texoma 3 counties

Traffic Congestion - Page 3 of 3

This map demonstrates traffic data of estimated road speeds. The data, shown as green, yellow, orange and red "includes **typical** speeds, which are the expected traffic conditions throughout the week. Traffic Data also includes **live** speeds, which are speeds that have been directly observed in the last 15 minutes. Traffic Data speed predictions are calculated using the 300 million miles of anonymous location data collected daily from mobile devices running Mapbox-powered apps."



 Texoma 3 counties

Traffic Map Legend:

Color	Congestion level
Green	Low
Yellow	Moderate
Orange	Heavy
Red	Severe

Population

Resident Population

209,001

People

Texoma 3 counties

40,428

People

Cooke County, TX

133,527

People

Grayson County, TX

35,046

People

Fannin County, TX

Resident Density

No data

People per acre

Texoma 3 counties

0.1

People per acre

Cooke County, TX

0.2

People per acre

Grayson County, TX

0.1

People per acre

Fannin County, TX

Daytime Population

178,146

People

Texoma 3 counties

37,550

People

Cooke County, TX

115,797

People

Grayson County, TX

24,799

People

Fannin County, TX

Daytime Population Density

No data

People per acre

Texoma 3 counties

0.1

People per acre

Cooke County, TX

0.2

People per acre

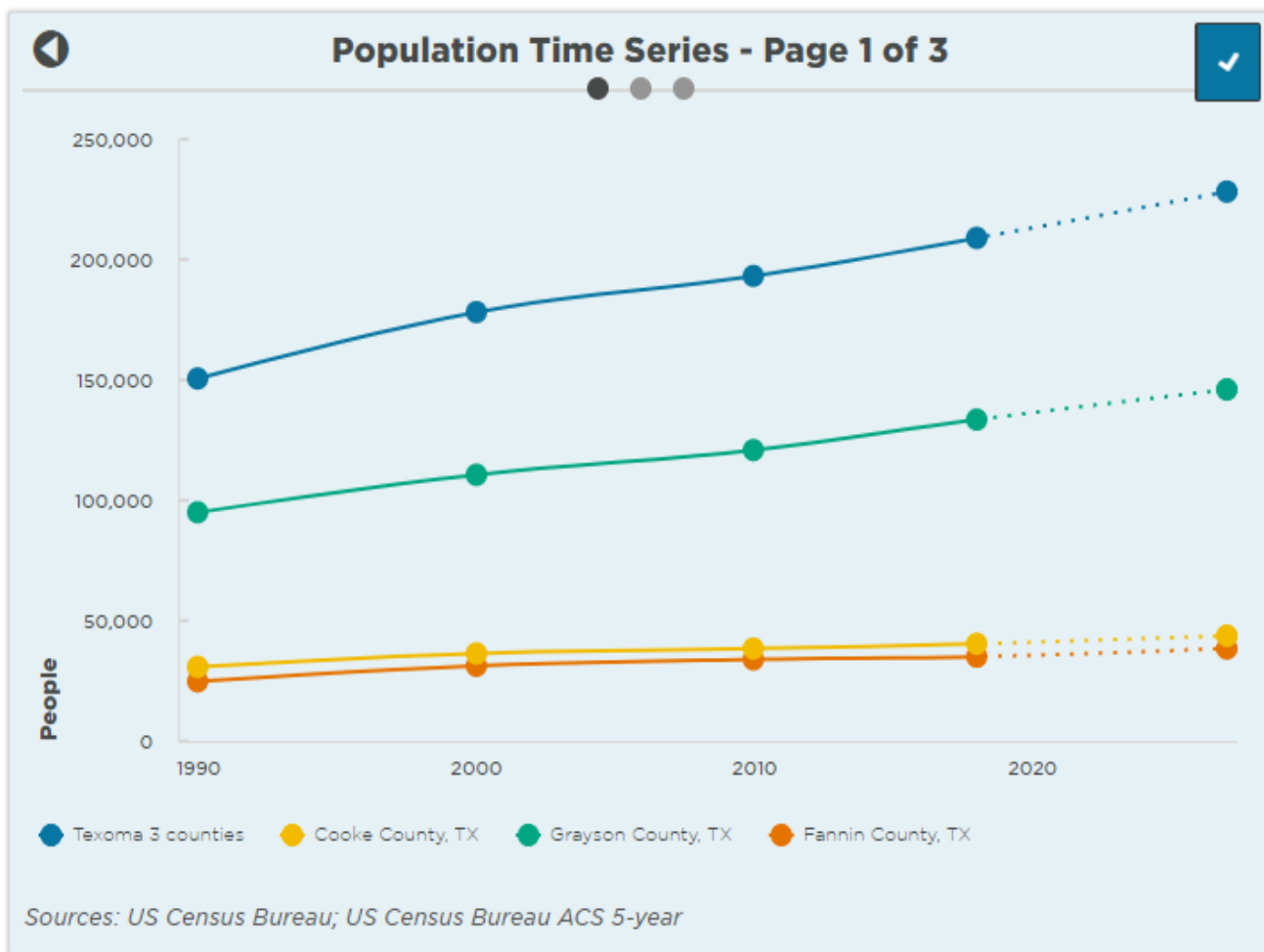
Grayson County, TX

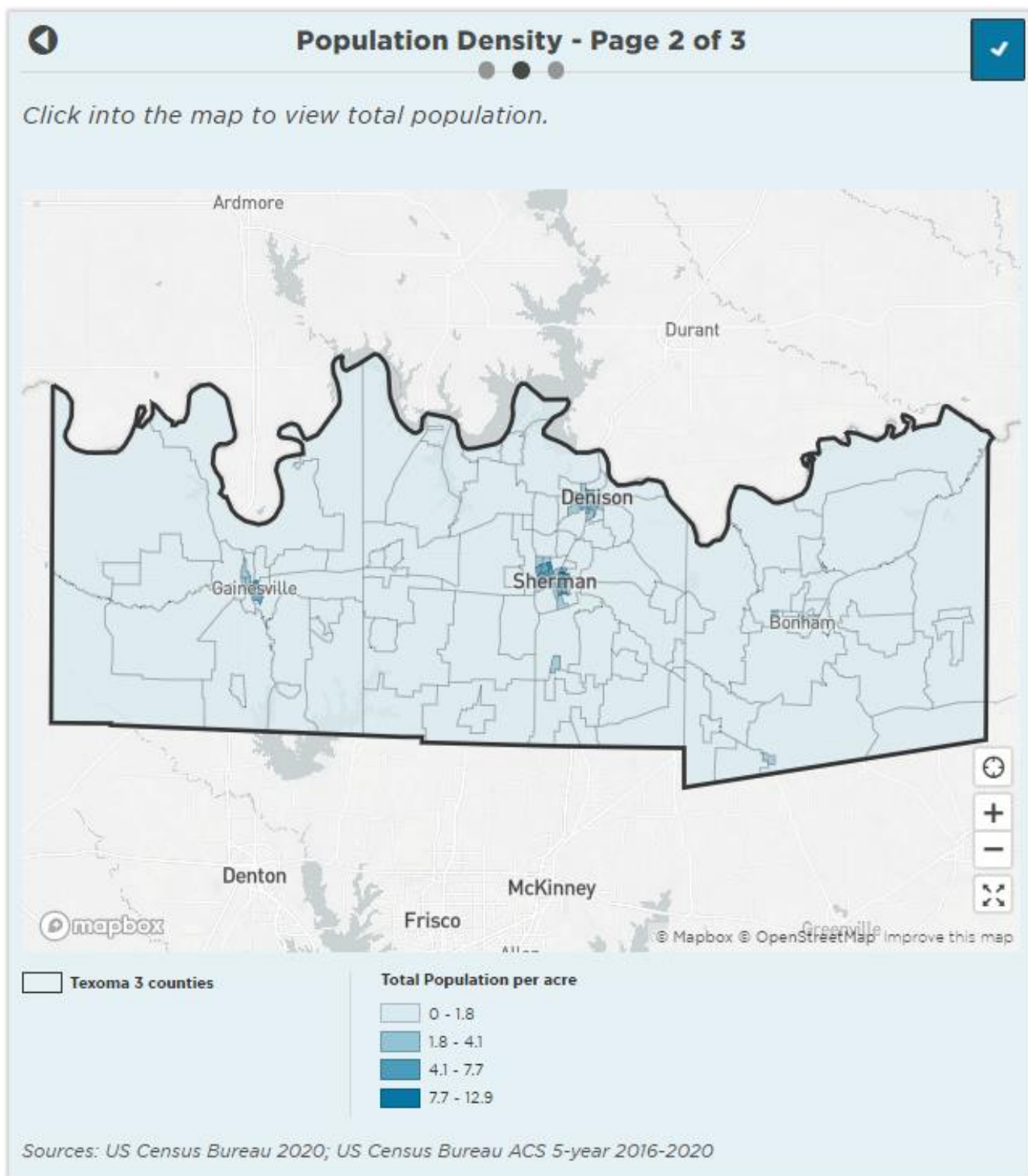
0

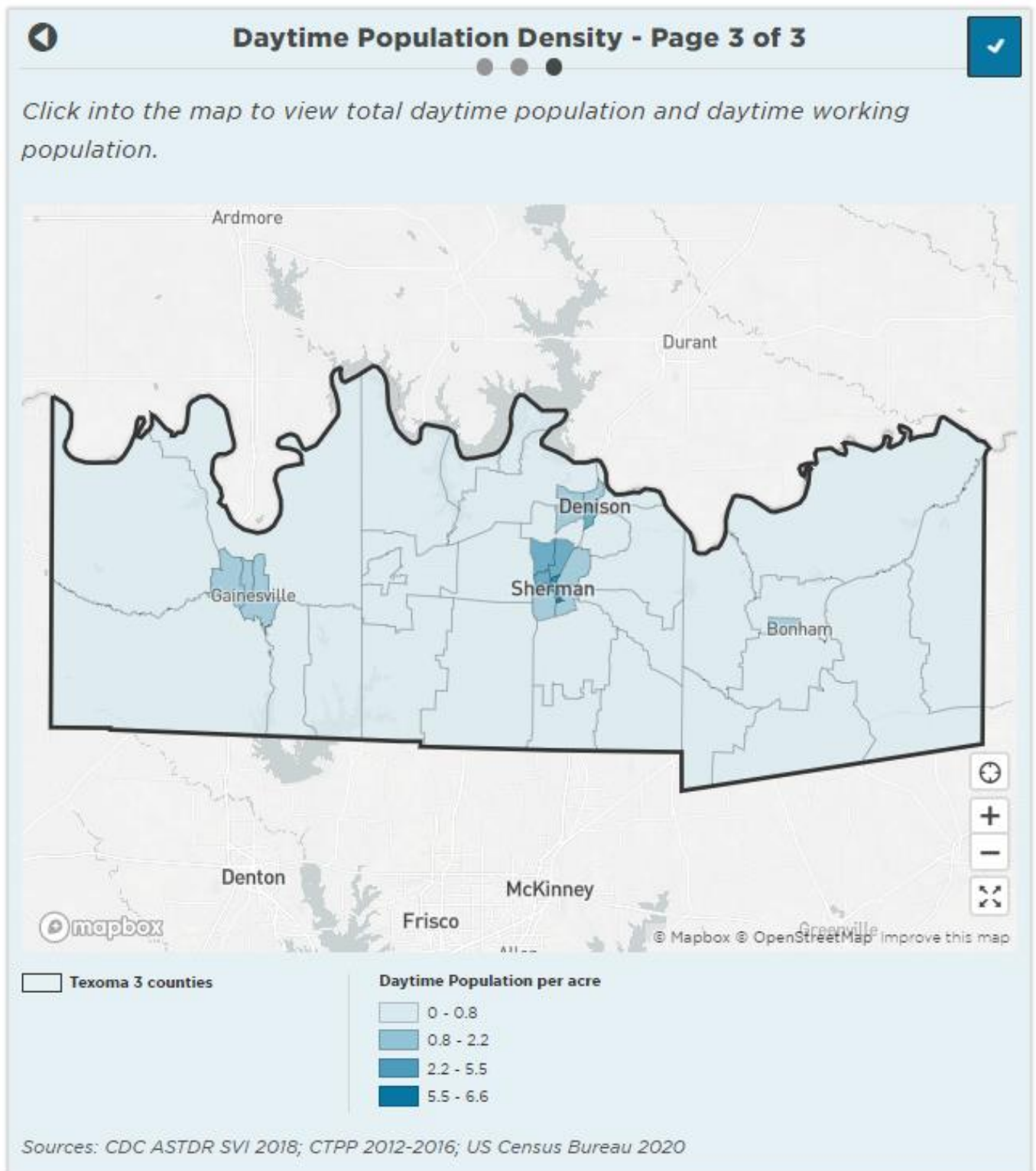
People per acre

Fannin County, TX

Sources: CDC ASTDR SVI 2018; US Census Bureau 2020; US Census Bureau ACS 5-year 2016-2020







Demographics



Females
50.4%
of total population
Texoma 3 counties

50.4%
of total population
Cooke County, TX

51.2%
of total population
Grayson County, TX

47%
of total population
Fannin County, TX



Males
49.6%
of total population
Texoma 3 counties

49.6%
of total population
Cooke County, TX

48.8%
of total population
Grayson County, TX

53%
of total population
Fannin County, TX



Median Age
41.3
Years old
Texoma 3 counties

41.2
Years old
Cooke County, TX

39.4
Years old
Grayson County, TX

41
Years old
Fannin County, TX



College Educated
20.4%
of adults age 25 and over
Texoma 3 counties

21.8%
of adults age 25 and over
Cooke County, TX

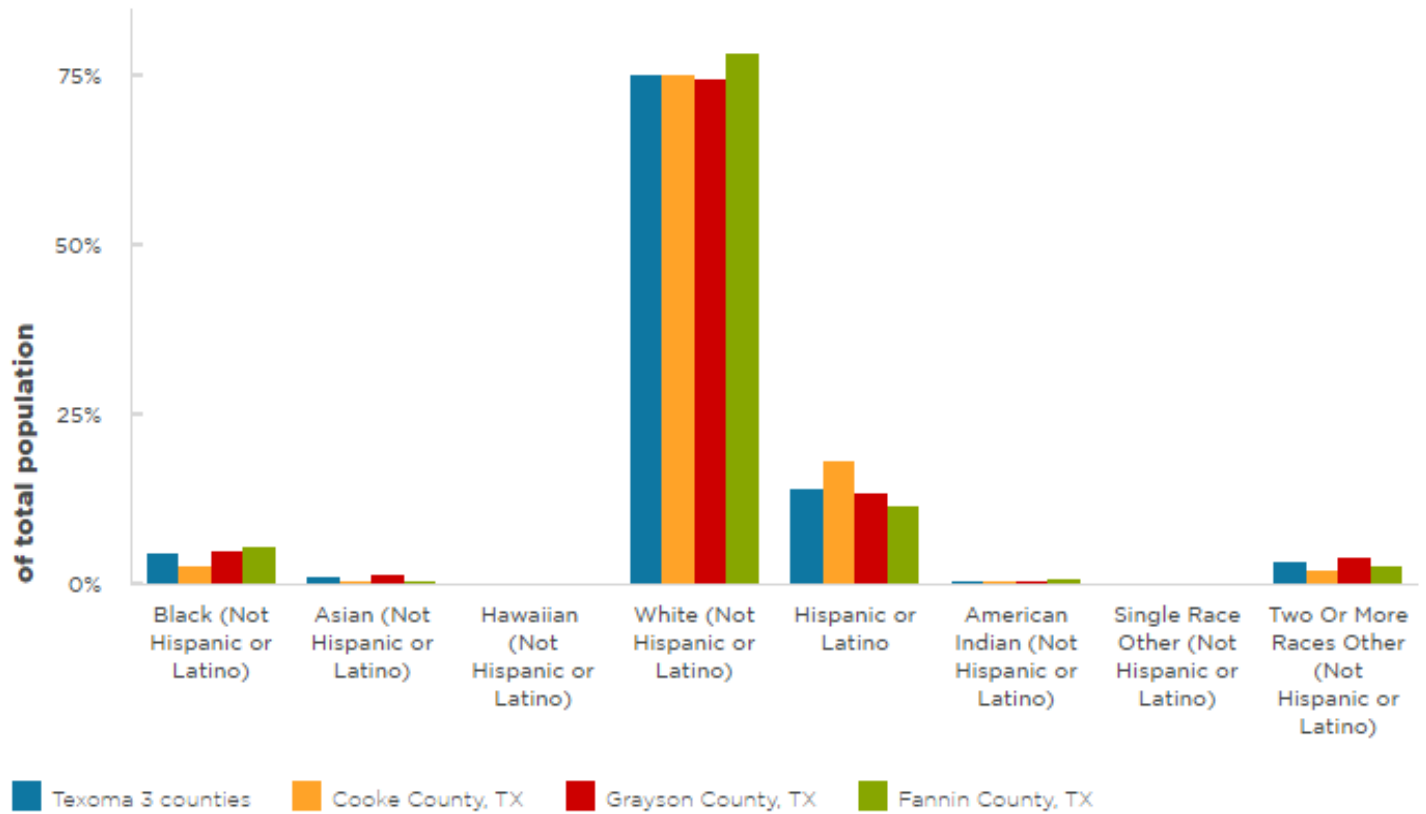
20.6%
of adults age 25 and over
Grayson County, TX

17.9%
of adults age 25 and over
Fannin County, TX

Sources: US Census Bureau ACS 5-year 2016-2020



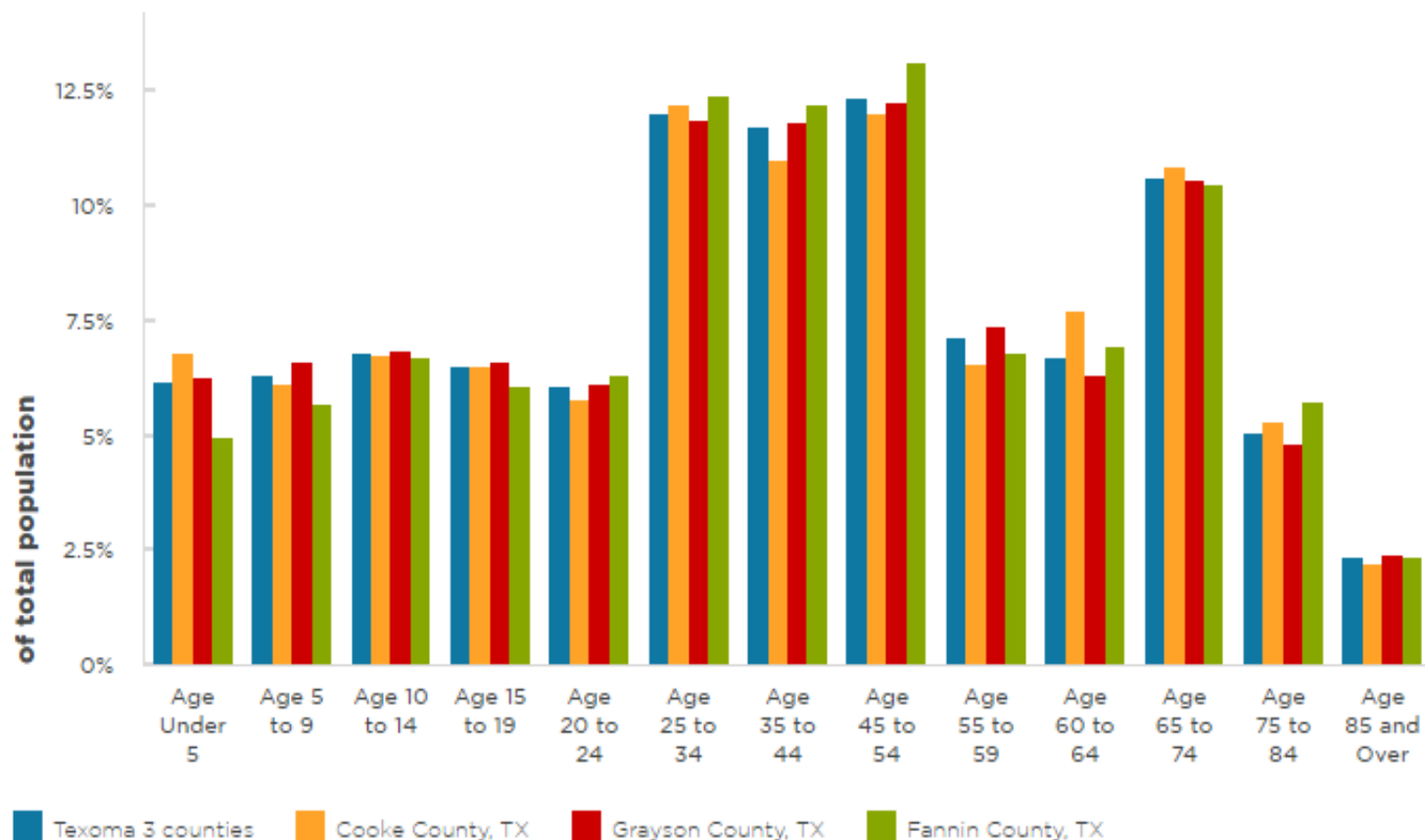
Population by Race and Ethnicity - Page 1 of 4



Sources: US Census Bureau ACS 5-year 2016-2020



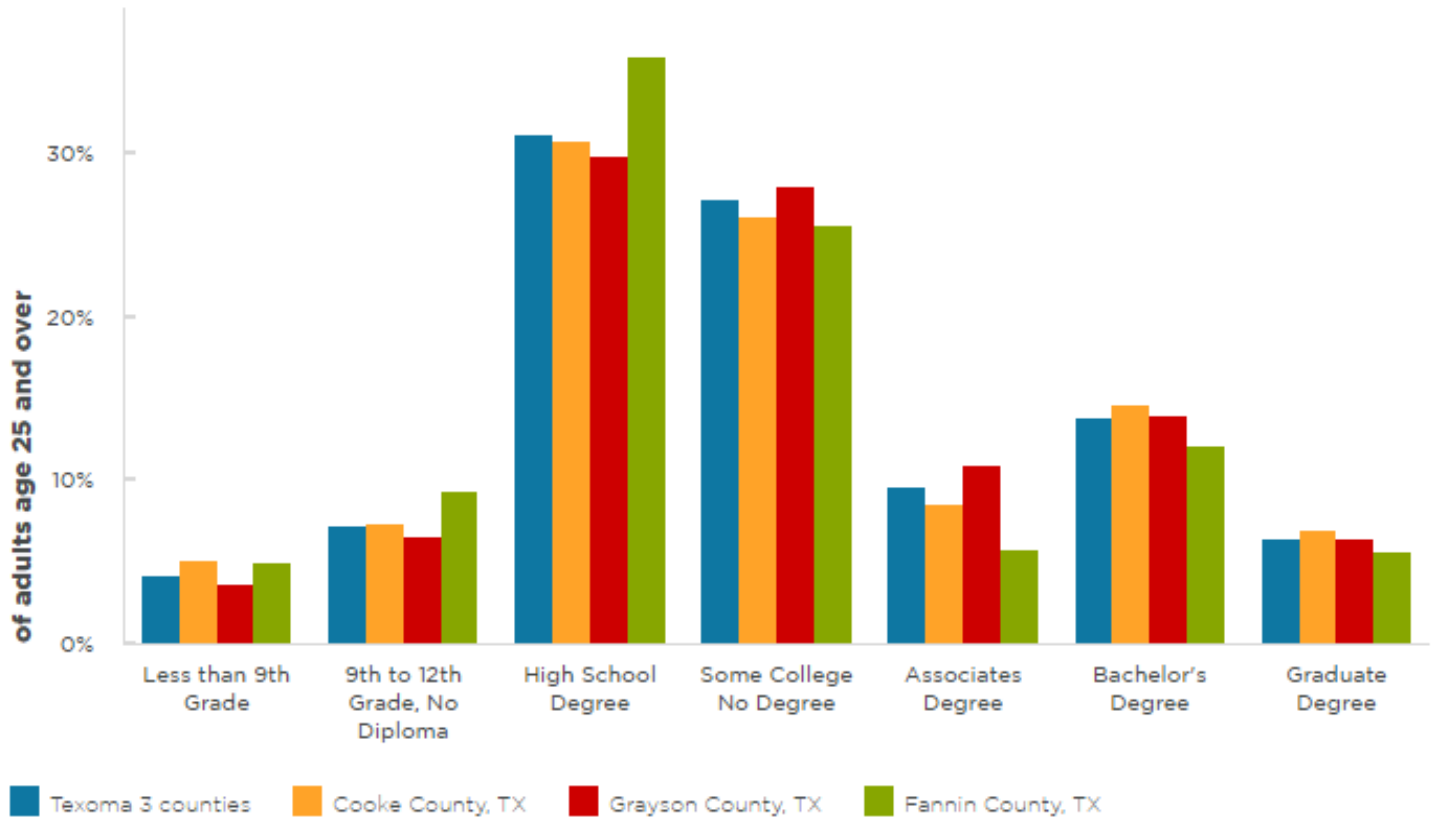
Population by Age - Page 2 of 4



Sources: US Census Bureau ACS 5-year 2016-2020



Educational Attainment - Page 3 of 4



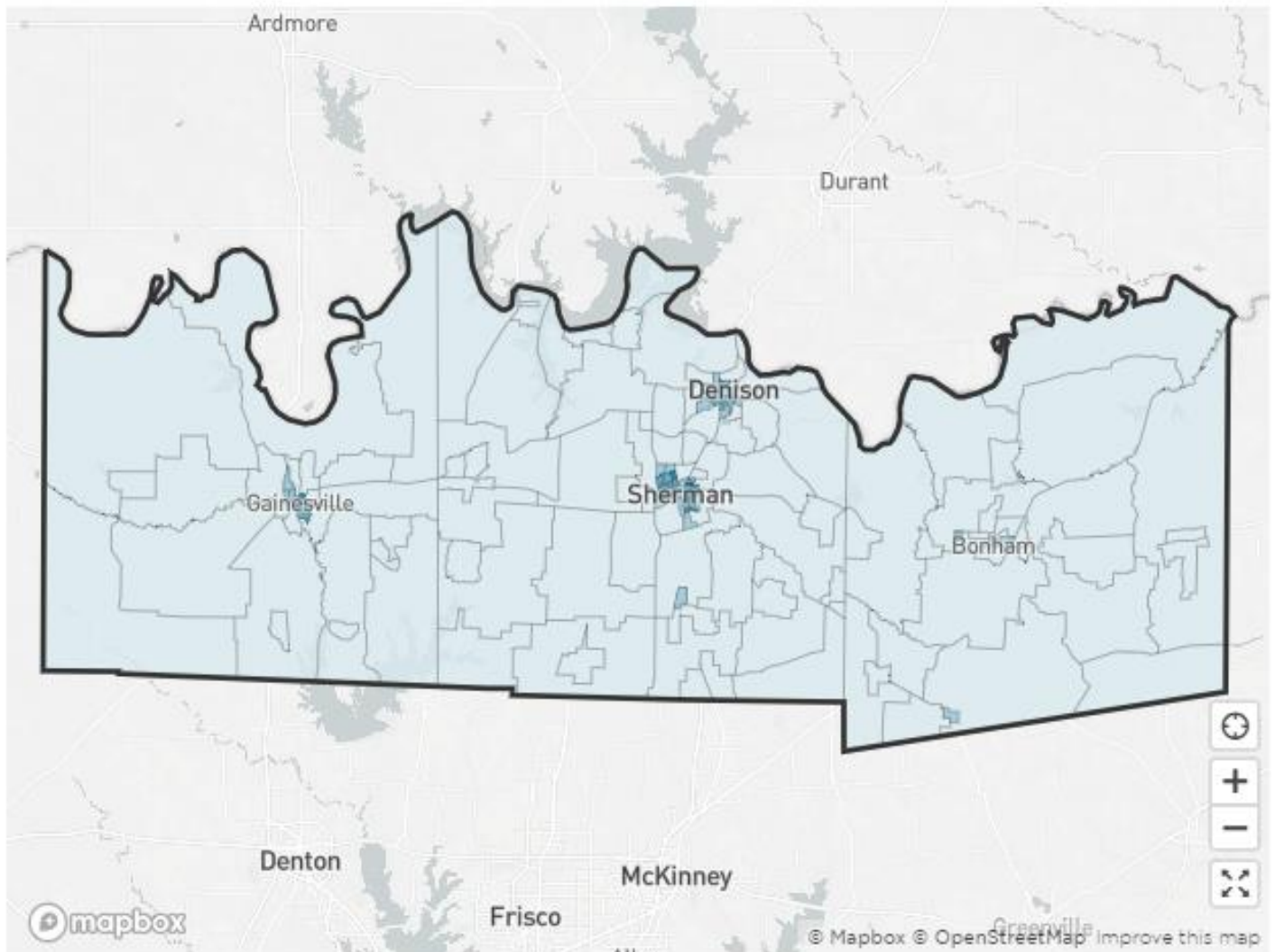
Sources: US Census Bureau ACS 5-year 2016-2020



Demographic Data by Census Block Group - Page 4 of 4

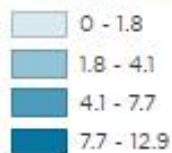


Click into the map to view total females, males, median age and percent college educated.



Texoma 3 counties

Total Population per acre



Sources: US Census Bureau 2020; US Census Bureau ACS 5-year 2016-2020

Housing Units

Total Housing Units

88,213

Housing units

Texoma 3 counties

16,986

Housing units

Cooke County, TX

56,749

Housing units

Grayson County, TX

14,478

Housing units

Fannin County, TX

Vacant Housing Units

10,965

Housing units

Texoma 3 counties

1,456

Housing units

Cooke County, TX

7,422

Housing units

Grayson County, TX

2,087

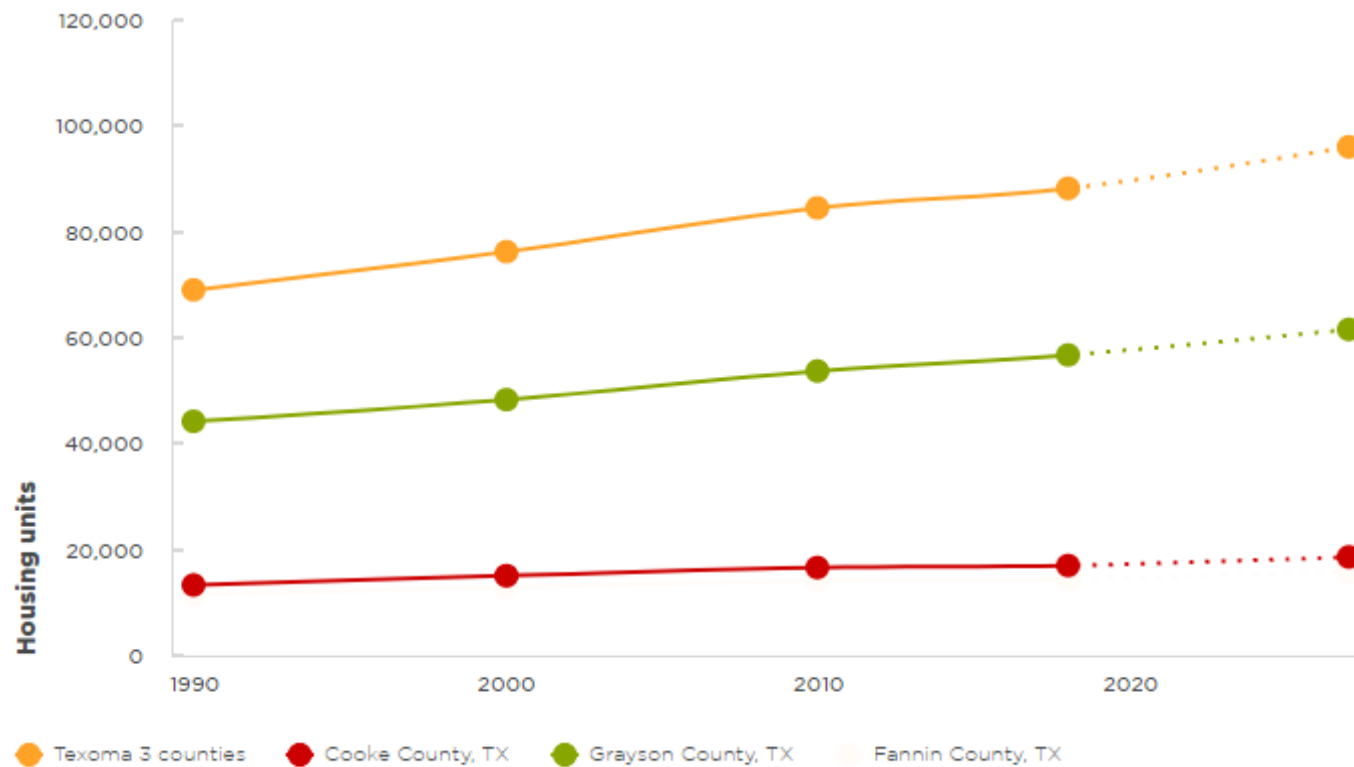
Housing units

Fannin County, TX

Sources: US Census Bureau ACS 5-year 2016-2020



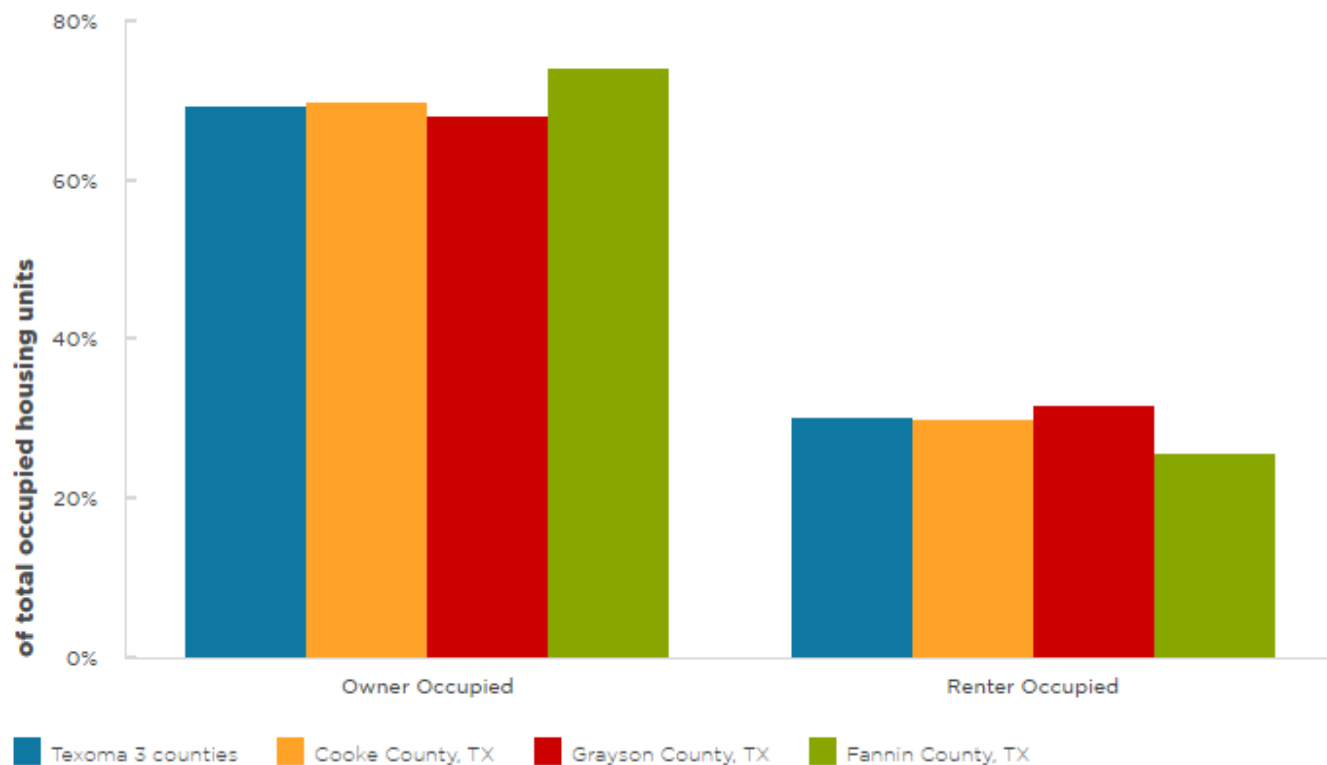
Housing Units Time Series - Page 1 of 4



Sources: US Census Bureau; US Census Bureau ACS 5-year



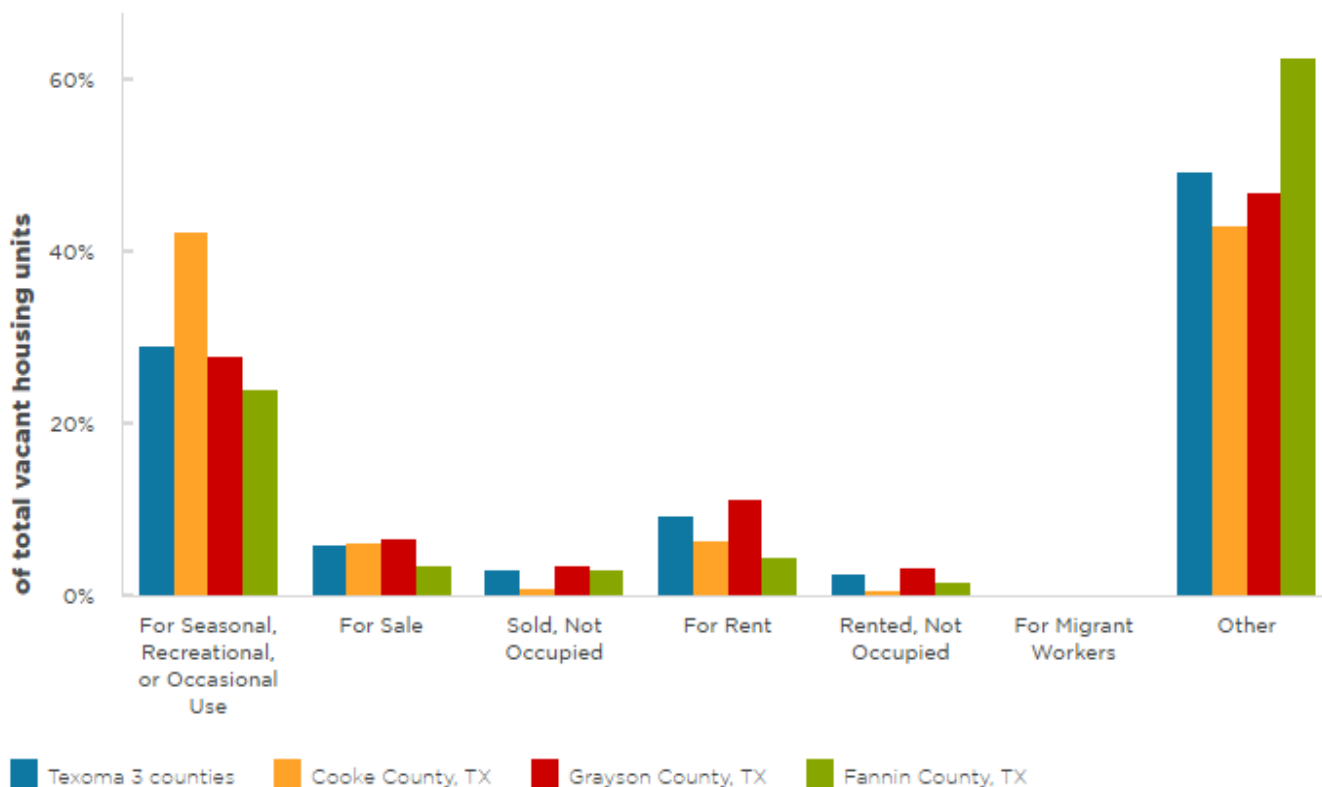
Owner and Renter Occupied Housing Units - Page 2 of 4



Sources: US Census Bureau ACS 5-year 2016-2020



Vacant Housing Units by Status - Page 3 of 4



Sources: US Census Bureau ACS 5-year 2016-2020

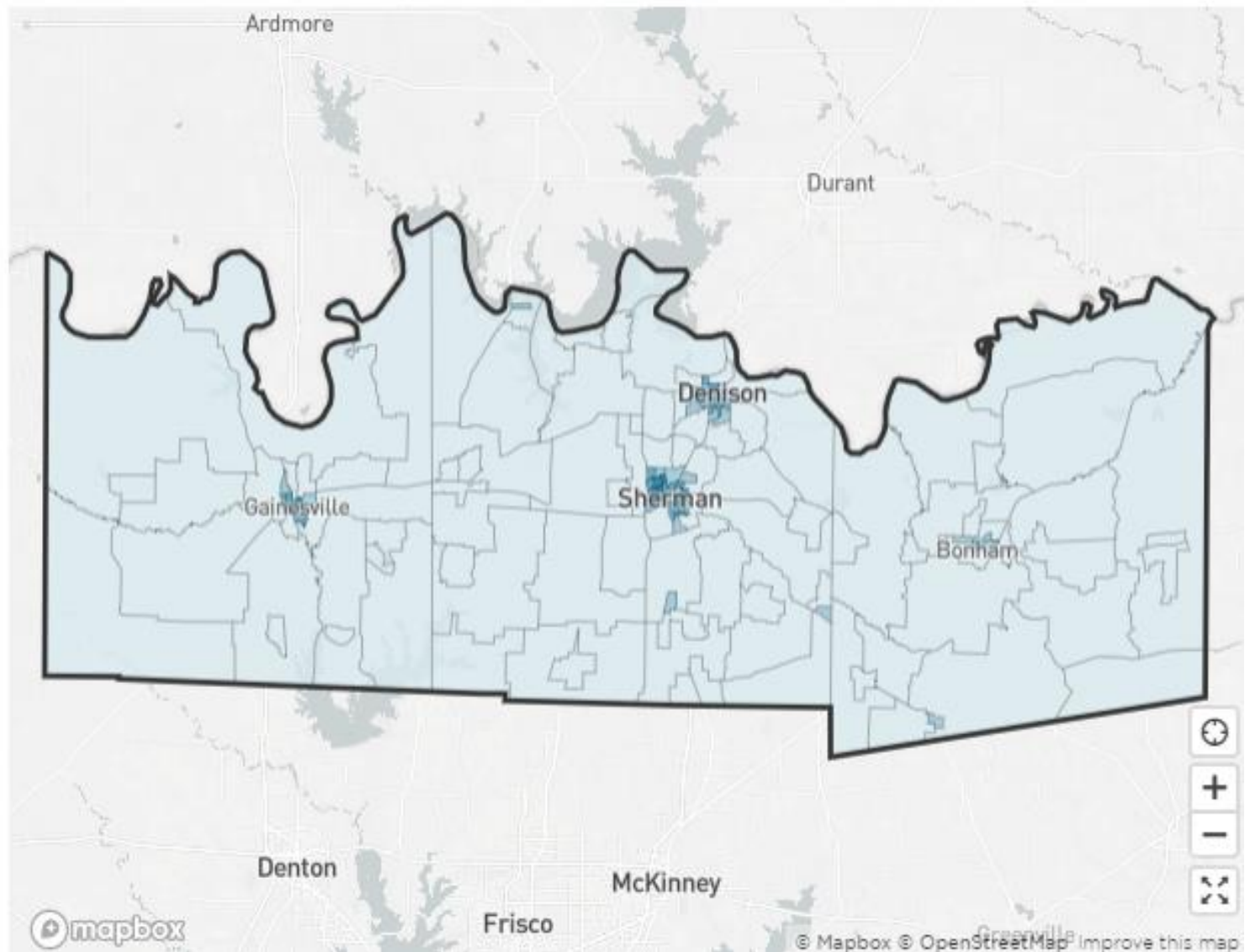
Note: The "Other" vacancy status includes those vacant for reasons of foreclosure, personal/family reasons, held in legal proceedings, preparing to rent/sell, held for storage of household furniture, needs repairs, currently being repaired/renovated, specific use housing, extended absence, abandoned/possibly to be demolished/possibly condemned, and reason for vacant unknown (Source <https://www.census.gov/housing/hvs/definitions.pdf>)



Housing Unit Data by Census Block Group - Page 4 of 4

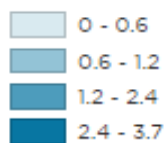


Click into the map to view total housing units, vacant housing units, owner occupied housing units and renter occupied housing units.



Texoma 3 counties

Housing Unit Density per Acre



Sources: US Census Bureau 2020; US Census Bureau ACS 5-year 2016-2020

Socioeconomic Status

Median Household Income

\$64,136

USD

Texoma 3 counties

\$62,733

USD

Cooke County, TX

\$58,296

USD

Grayson County, TX

\$57,898

USD

Fannin County, TX

Households Below Poverty

11.8%

of total households

Texoma 3 counties

10.8%

of total households

Cooke County, TX

11.7%

of total households

Grayson County, TX

13.2%

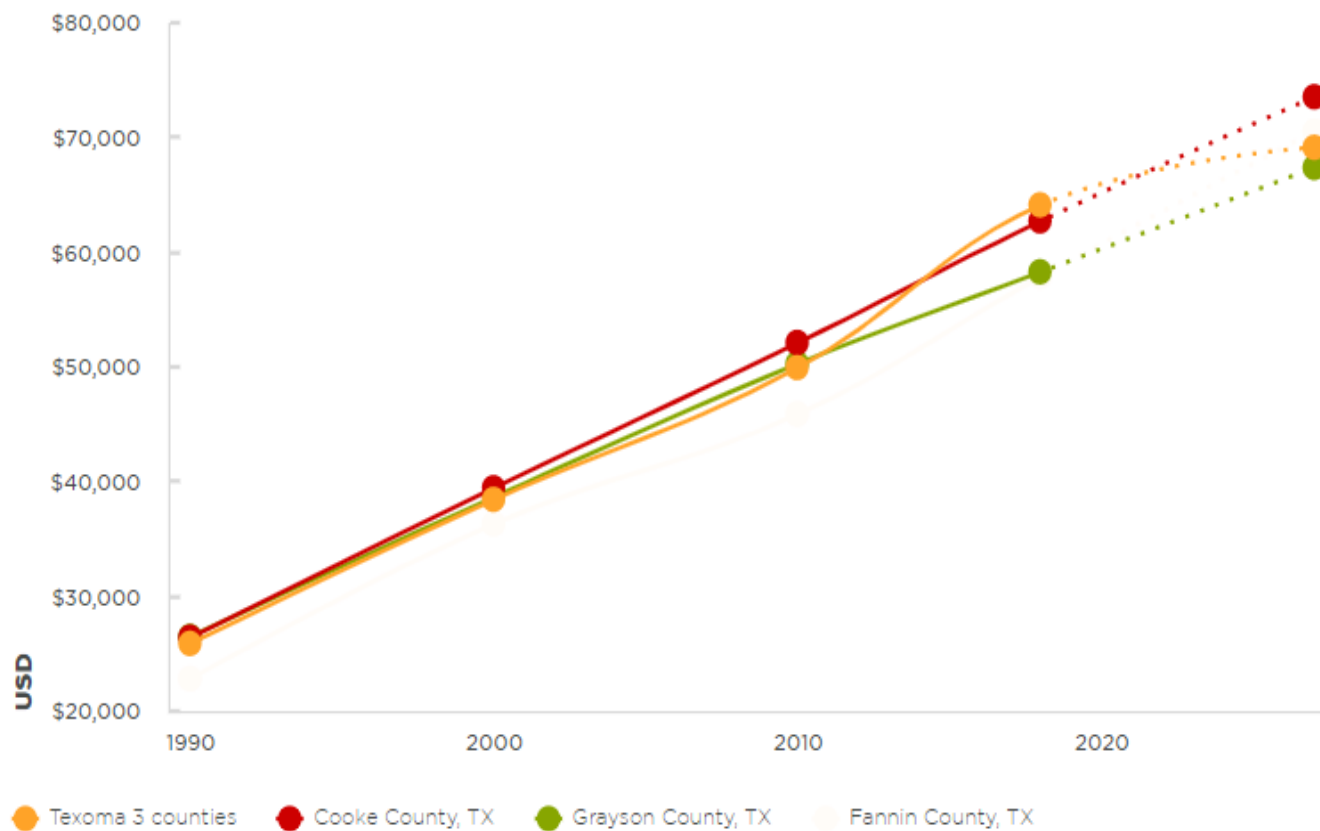
of total households

Fannin County, TX

Sources: US Census Bureau ACS 5-year 2016-2020



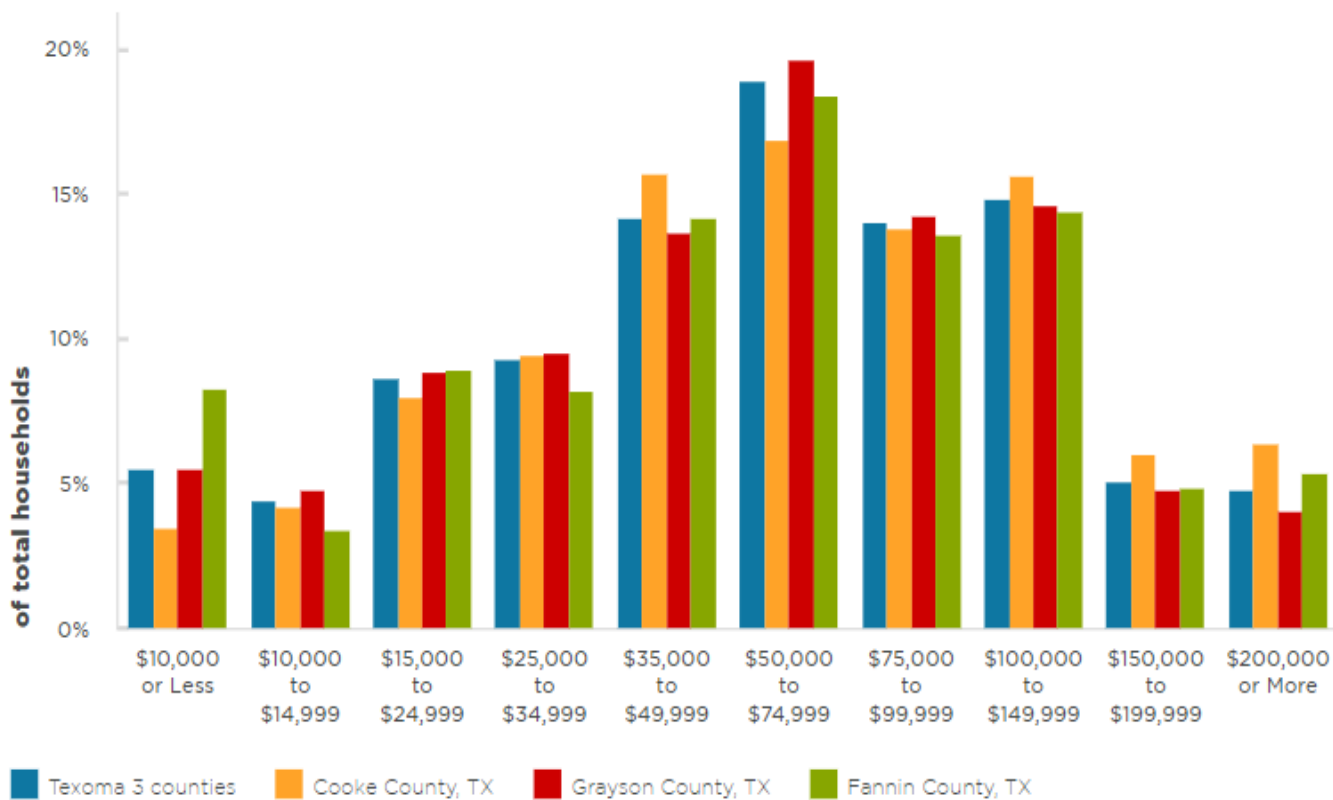
Median Household Income Time Series - Page 1 of 5



Sources: US Census Bureau; US Census Bureau ACS 5-year



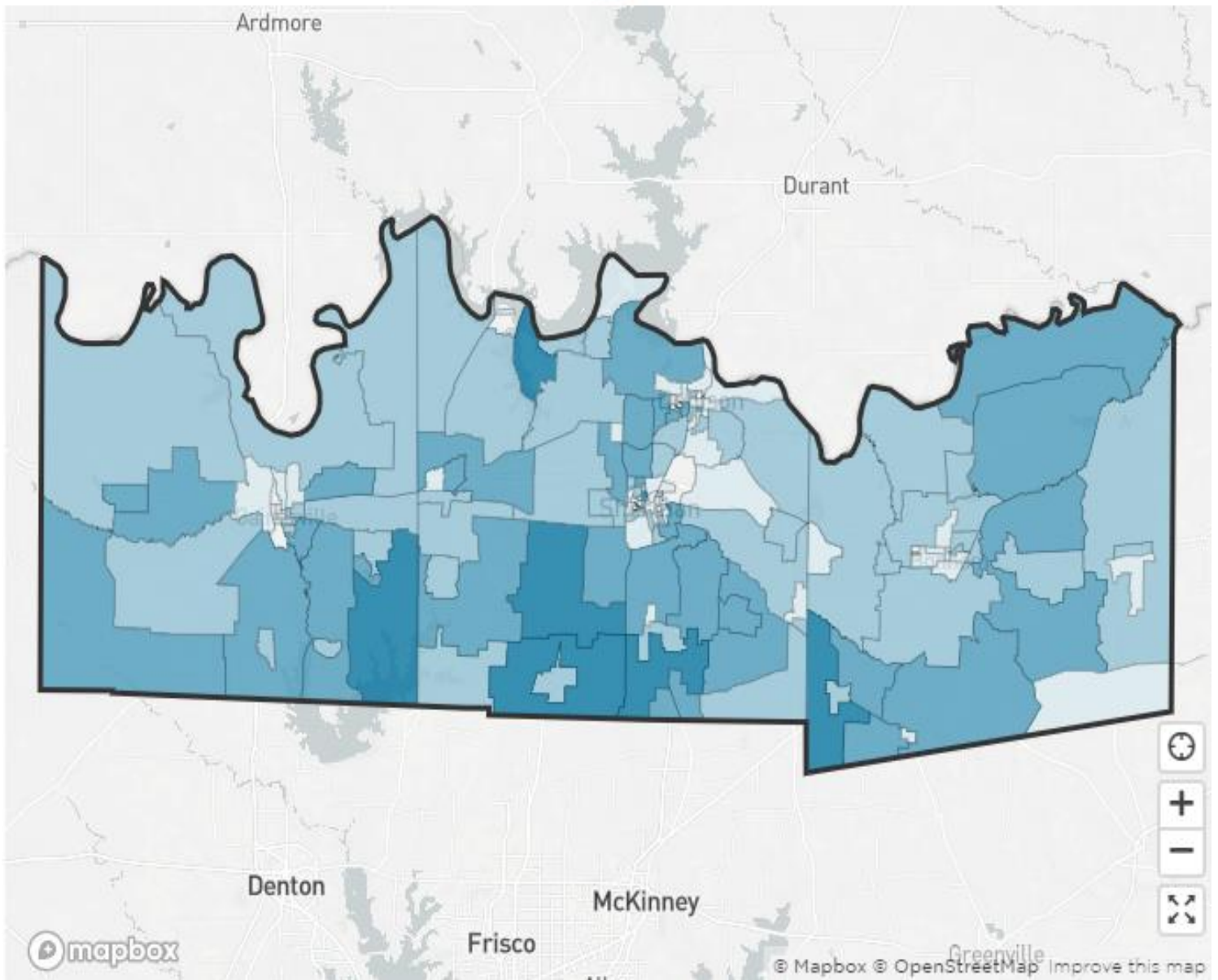
Household Income - Page 2 of 5



Sources: US Census Bureau ACS 5-year 2016-2020



Household Income Map - Page 3 of 5



Texoma 3 counties

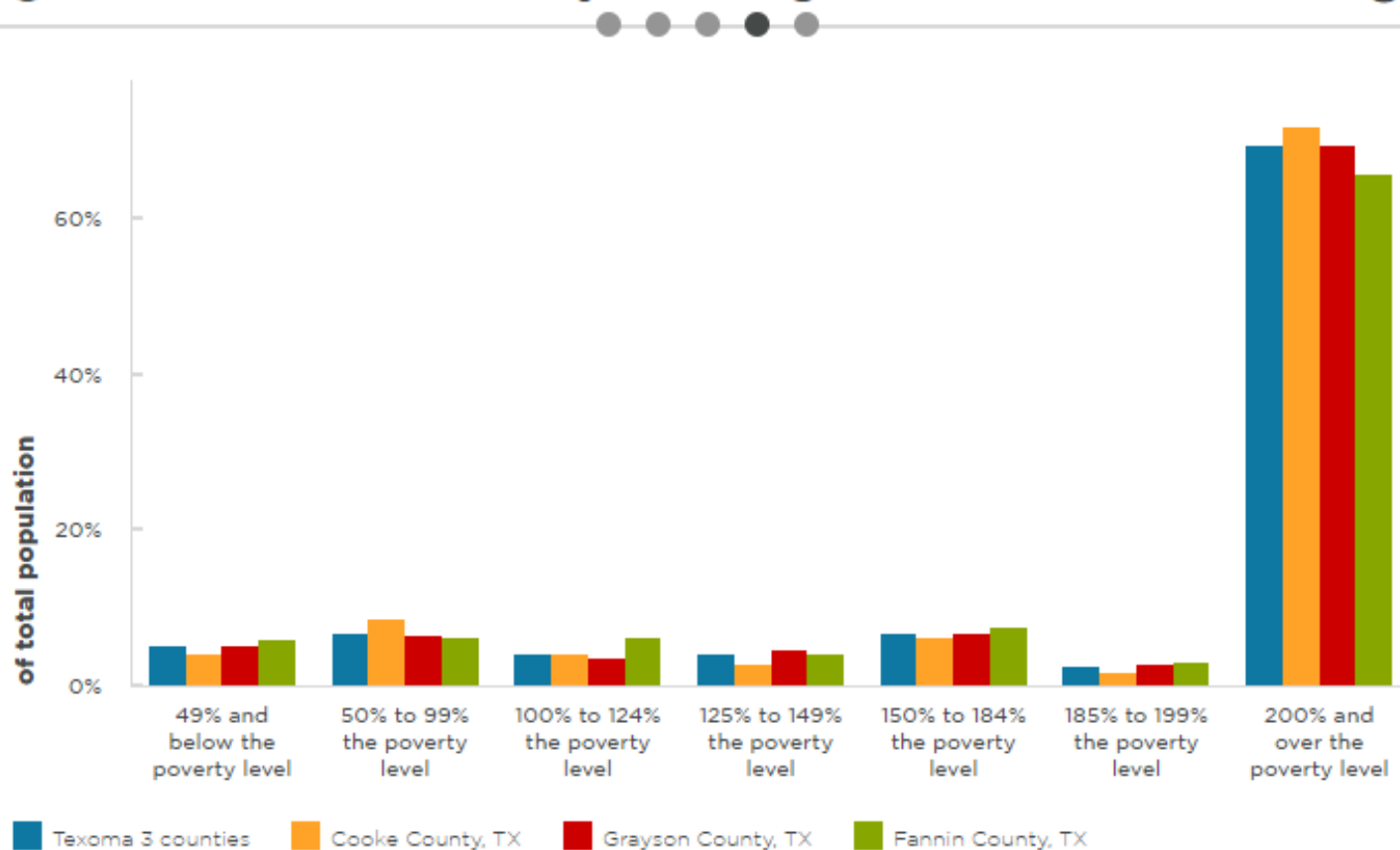
Median Household Income

	\$22,093 - \$50,864
	\$50,864 - \$72,940
	\$72,940 - \$105,685
	\$105,685 - \$143,385

Sources: US Census Bureau ACS 5-year 2016-2020



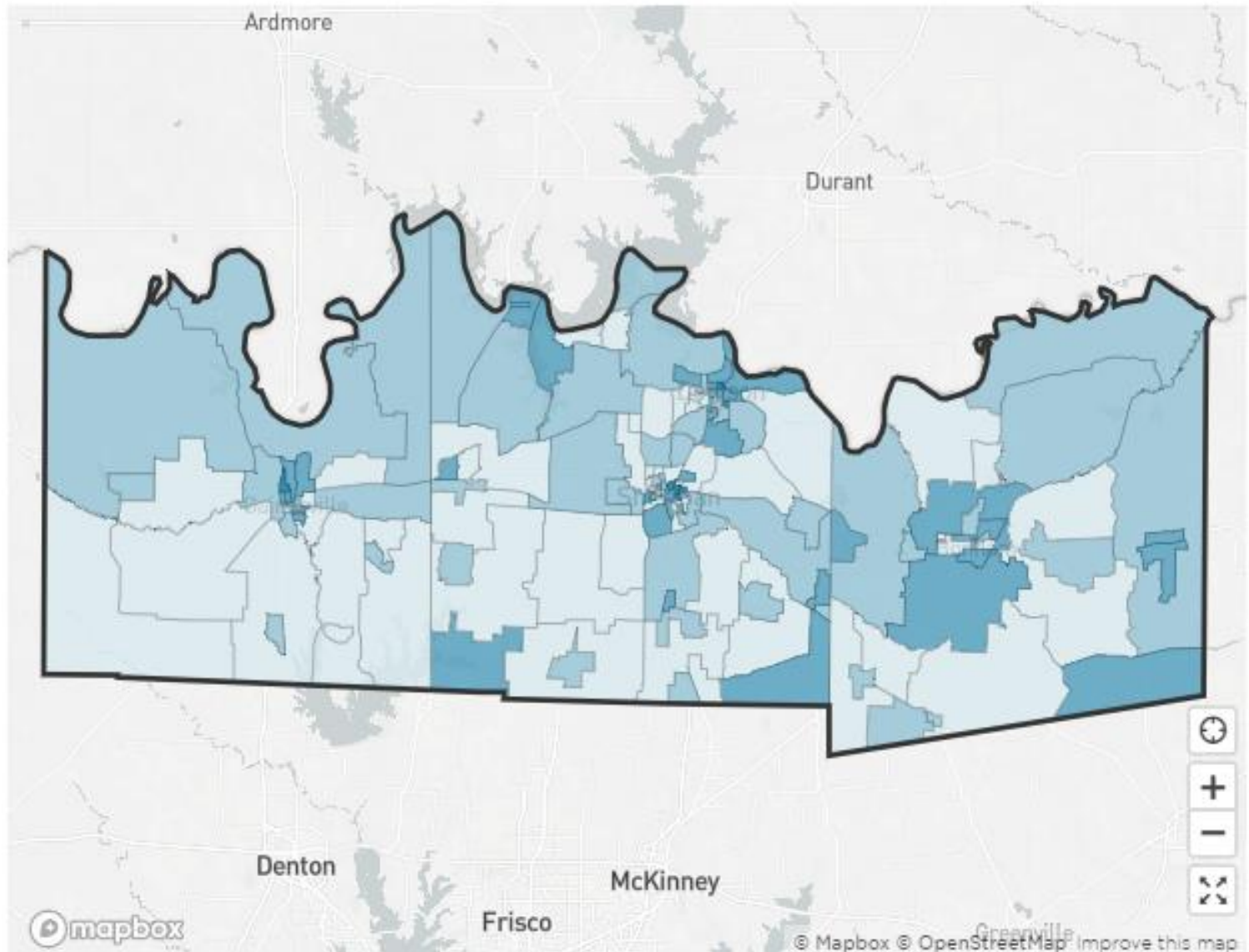
Poverty Rate - Page 4 of 5



Sources: US Census Bureau ACS 5-year 2016-2020

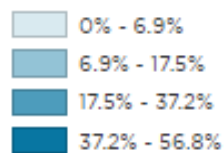
Households Below Poverty Level - Page 5 of 5

Click into the map to view total households below poverty.



Texoma 3 counties

Percent of Households Below Poverty Level



Sources: US Census Bureau ACS 5-year 2016-2020